



## **JUNE 11<sup>TH</sup>, 2013** **INFORMATION BUILDERS UK SUMMIT**

Amtex Solutions Ltd is the UK company within the Amtex Group. Amtex has been working with IBI since 2001 and has undertaken over 100 customer projects. In the UK Amtex is providing specialist services for WebFOCUS and iWay along with a G-Cloud based BI Software as a Service (SaaS) offering.



**PARTNER OF IBI  
FOR 12 YEARS**

---

**OVER 250  
PROFESSIONALS  
EXPERIENCED IN  
WEBFOCUS & IWAY**

---

**OVER 100 CLIENT  
PROJECTS WITH  
IWAY & WEBFOCUS**

---

**BI AND DATA  
MIGRATIONS  
INCLUDING  
WEBFOCUS 8**

---

**CLOUD SOFTWARE  
AS A SERVICE  
SPECIALISTS**

### **AMTEX SOLUTIONS LTD.**

83 Victoria Street,  
Buckingham Palace Gate  
London SW1 H 0HW

[www.amtexsystems.com/web  
focuscloudexpress](http://www.amtexsystems.com/webfocuscloudexpress)

Tel: +44 (0) 203 008 6450  
(ext6451)

Fax: +44 (0) 203 008 6180

## WebFOCUS Cloud Express as a Service

WebFOCUS Cloud Express software as a service is delivered as a managed G-Cloud service by Amtex Solutions Ltd.

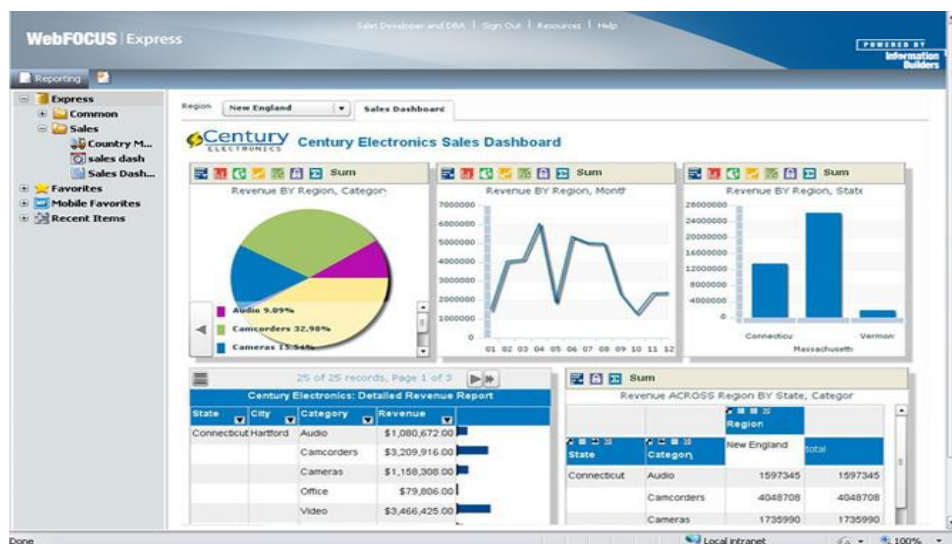
WebFOCUS Cloud Express is a G-Cloud business intelligence platform that combines WebFOCUS Express software from Information Builders and a Microsoft SQL Server 2012 data warehouse. The platform runs on Microsoft Windows Server 2012 64 bits and is deployed with Memset IaaS platform that is IL2 compliant and ISO 27001 certified. The managed service from Amtex Solutions Ltd is ISO 9001 certified.

### A highlight of the features and benefits:

WebFOCUS Cloud Express has brought one of the world's leading and trusted BI tool sets to the UK G-Cloud platform. The WebFOCUS BI platform is recognized as one of the leading business analytics, business intelligence and data integration platforms by BARC, Gartner, Ventana and other research companies.

The WebFOCUS BI platform is used by a number of UK public sector organisations including Central North West London NHS Trust, Greater Manchester Police, Debt Management Office and The Northern Ireland Civil Service.

The underlying WebFOCUS BI platform enables robust, flexible, operational reporting and analysis for line-of-business users who need timely information to improve decision-making and effectively carry out daily activities. WebFOCUS is built on a highly efficient and scalable architecture that can easily expand as needs grow and change.



WebFOCUS Cloud Express provides a secure turnkey solution for business analytics, business intelligence, data discovery, data visualisation and enterprise reporting. It is delivered as a SaaS service with an embedded data warehouse based on Microsoft SQL Server 2012 and wizard based data integration that automatically upload data and generates dashboards and reports. Open APIs are provided to integrate content with external applications, portals and mash-ups.

WebFOCUS Cloud Express allows public sector entities to leverage high-performance, full-featured business intelligence capabilities, such as:

- 100 percent web-based deployment –no additional client hardware or software to install or maintain
- A single web-based environment for accessing and using all reporting, dashboards and analysis capabilities
- Wizard-style interfaces that lower the barrier to entry, simplifying all phases of the data definition and reporting process
- User-friendly development tools that eliminate the need for SQL coding or object-oriented development expertise
- Access to all the data across the organisation via more than 26 pre-built data adapters
- Distribution of reports and dashboards to users across all mobile platforms (Android and iOS) and web browsers supporting mobility and BYOD initiatives
- Distribution of reports and dashboards via e-mail to individuals and work group
- REST API supporting XML and JSON for external system and content integration
- Deployed on a IL2 compliant cloud infrastructure (IL3 later in year)
- ISO 9001 and ISO 27001 certified operations
- 99.995% up-time guarantee
- Highly secure environment for your data with virus protection, advanced router level firewalling, denial of service (DoS) protection, regular security vulnerability assessment and scanning

WebFOCUS Open API supports wide range of integration based on REST/JSON web service standards. Some examples are shown below for geo-mapping and data visualisations. These can in turn be embedded into web sites and other services driven by the data services behind WebFOCUS Cloud Express:

Ordnance Survey OpenSpace API:



D3JS Data Visualisation API:



### BI Jumpstart Programme

With all the benefits that WebFOCUS Cloud Express provides it seems logical to kick start a BI Programme in your organisation? But where do you begin, what is your strategy, and how do you win the confidence of business stakeholders right away? Don't worry, that is where our BI Jumpstart programme comes to your rescue.

The BI Jumpstart programme empowers public sector organisation to solve a business problem with a customized BI solution with your data in 10 days. Our team of experts' work in your location while interacting with your key stakeholders to identify & address key business issues with the power of WebFOCUS Cloud Express. The programme also provides a long term strategic framework for your BI programme and lay out a tactical plan to achieve that vision.

The BI jumpstart programme provides instant impact to public sector organisations as you are able to develop and share BI reports & dashboards across the organisation in days. It also gives the organisation the opportunity to learn from experts who are on-site building a customized solution. It also provides a BI roadmap which is aligned with the organisations long term business strategy while adapting to your dynamic business processes. Most importantly the programme is designed to solve an actual business problem within the given timeframe hence providing no-risk, no-obligation, and all-gain opportunity for your organisation.

#### More Information

**Mr. Santhosh Balasubramanian**

**Director**

**Email: [santhosh@amtexsystems.com](mailto:santhosh@amtexsystems.com)**

**Telephone: 0203 008 6450**

**Miss Sangeeta Nandi**

**Client Relations & Marketing Coordinator**

**Email: [snandi@amtexsolutions.co.uk](mailto:snandi@amtexsolutions.co.uk)**

**Telephone: 0203 008 6451**